



# SEARAY™

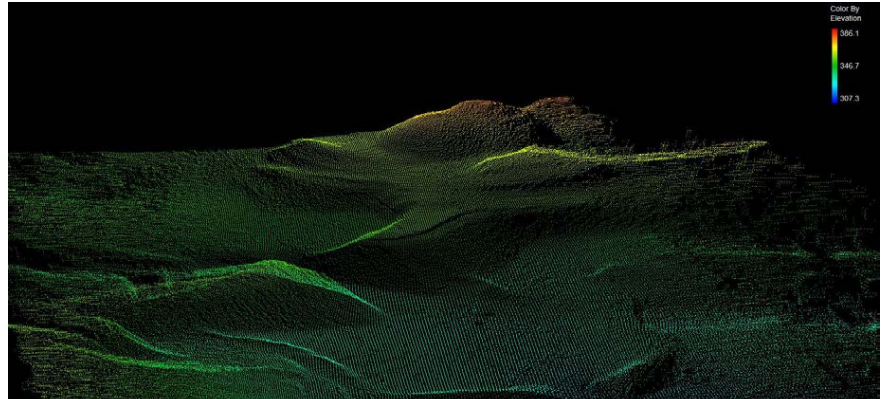
Multibeam Echosounder for Unmanned Surface Vessels



# Seafloor™



The **SeaRAY™** is an extremely compact multibeam sonar system designed for a multitude of hydrographic survey applications. Its compact footprint allows for simple integration on unmanned surface vessels, from which it can be mobilized into ponds, lakes, rivers, and dredge pits. A hydrodynamic, energy-efficient design makes optimal use of battery power, prolonging survey longevity in the field. Data acquisition software included.



## SPECIFICATIONS

- ▶ Frequency Range ..... **400-550 kHz**
- ▶ Swath Coverage/Range ..... **Up to 130° / > 200m**
- ▶ Number of RX Beams ..... **256**
- ▶ Along-Track Beam Width ..... **1.45°**
- ▶ Across-Track Beam Width ..... **1°**
- ▶ Power Consumption ..... **75W Max (50W Nominal)**
- ▶ Beam Distribution ..... **Equi-Distant and Equi-Angular Beam Distribution**
- ▶ Roll Stabilization ..... **Yes**
- ▶ Pressure Rating ..... **100m**
- ▶ GNSS / INS ..... **INS Integrated into Sonar**
- ▶ Position: ..... **HOR: ±(8mm +1ppm X Distance from RTK Station)  
VER: ±(15mm +1ppm X Distance from RTK Station)  
(Assumes 1m GNSS Separation)**
- ▶ Heading Accuracy ..... **0.08° (RTK) with 2m Antenna Separation**
- ▶ Pitch / Roll Accuracy..... **0.03° Independent of Antenna Separation**
- ▶ Heave Accuracy ..... **5cm or 5% (Real Time)**
- ▶ Ping Rate ..... **50 Hz**
- ▶ Outputs ..... **Bathymetry, Sidescan**
- ▶ Compatible With ..... **Qinsy, HYPACK, EIVA, Other Prominent Brands**
- ▶ Weight ..... **3.5kg (Air), 1.1kg (Water)**
- ▶ Topside Rating ..... **IP67 (Dust & Water Tight, Submersible up to 1m)**

