

Seafloor™ SMARTCAST

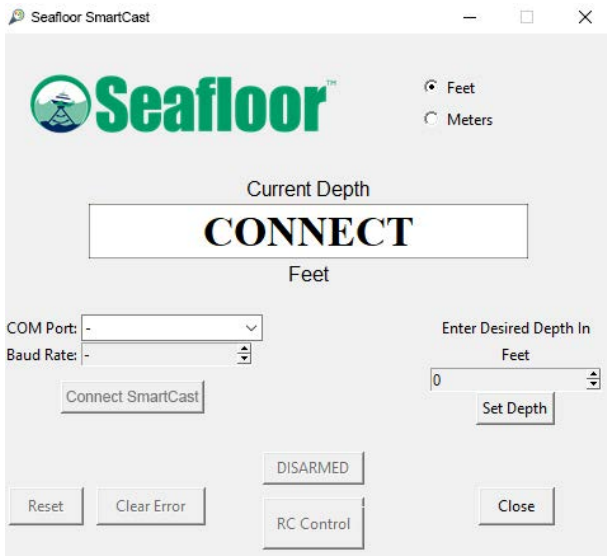
Sensor Deployment & Recovery System for USV's



Winch comes spooled with 30m of rope

The SmartCast™ was designed to automatically deploy a sound velocity profiler to user-selected depths. The winch can be mounted onto the front of the USV and uses an IP69k encoder to track the SVP. The user can arm the system, toggle between RC and auto, change units, enter the desired cast depth, and monitor cast activity all within the integrated Seafloor SmartCast software. Using the integrated limit switch, the home position is reset before every cast to ensure accurate casts. The system can also sense if the SVP has hit bottom, and will return to home when detected.

The winch comes spooled with enough rope to reach 30m and has been tested to give a margin of error of only 0.5% (15 cm) at max depth. Once the SVP resurfaces, data is automatically communicated to your PC or phone via bluetooth. The winch is compatible with most sound velocity profilers.



Intuitive User Interface

SPECIFICATIONS

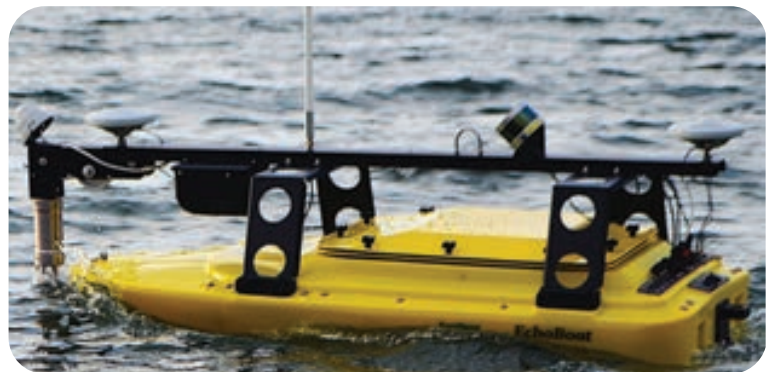
Max Length/ Depth : 30 m
Counter Accuracy: 0.5%
System Resolution: 0.10 cm
Max Payload: 10 kg

SENSORS

- ▶ Sound Velocity Profilers
- ▶ CTD Profilers
- ▶ Multi- Parameter Systems
- ▶ Water Sampling Sensors



Fully- Integrated Design



SmartCast with Valeport SWiFT SVP mounted on EchoBoat USV

Seafloor Systems, Incorporated | 4415 Commodity Way | Shingle Springs, CA 95682 | USA

info@seafloorsystems.com | www.seafloorsystems.com