

Seafloor™ HYDROCAT-180

Uncrewed Surface Vessel for Hydrographic Survey Applications



The **HydroCat-180™** USV is capable of transiting from inshore to nearshore environments with high-resolution equipment payloads to conduct preplanned autonomous hydrographic surveys.

The 18ft (5.5m) catamaran features individually-articulating pontoons, a gimballed deck, retractable sonar pole mount, and independently-actuated electric motors.

The vessel can be transported via trailer, programmed to execute missions, and navigate up to sea state 4 conditions with its aluminum hull construction.

FEATURES

- Wifi Data Communication System
- Onboard Industrial PC
- Independent Roll and Pitch Damping / Control
- Gimballed Payload Bay (Actively Cooled)
- Remote-Controlled Sonar Deployment Pole
- 4 Batteries (With option for additional batteries to extend operational endurance)
- 2 x 25HP Equivalent Torqueedo™ Motors With Electric Tilt / Trim
- AutoNav™ Autopilot System
- Auto-Stop Smart Charger for Payload Batteries
- Nav Aids (Strobe, Nav Lights, Day Shapes)
- Integrated Lifting Points
- Custom-Configured Dual Axle Trailer



Independently articulating pontoons

AVAILABLE SYSTEMS

- Single or Dual Head Ultra-High Resolution Multibeam Echosounder
- Sidescan Sonar
- Magnetometer
- Sub Bottom Profiler
- SmartCast™ Sound Velocity Profiling Winch
- 180° HD Video Camera
- Collision Avoidance Assist (LiDAR or LiDAR + Camera system)



High-powered payload options, like Teledyne's IDH T-50



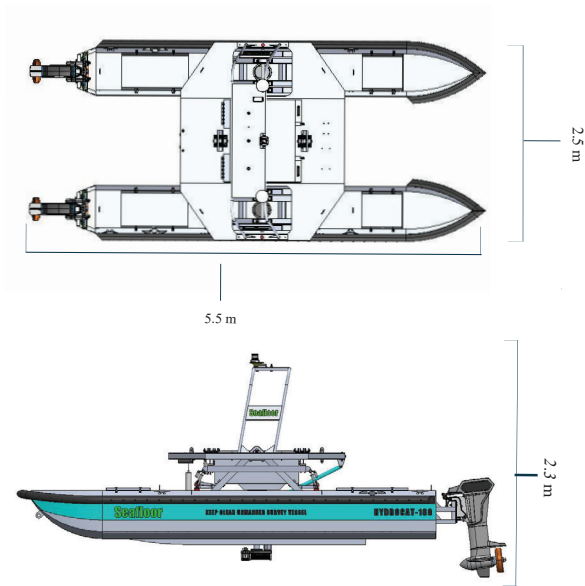
Transportable via trailer

Seafloor Systems, Incorporated | 4475 Golden Foothill Parkway | El Dorado Hills, CA 95762 | USA

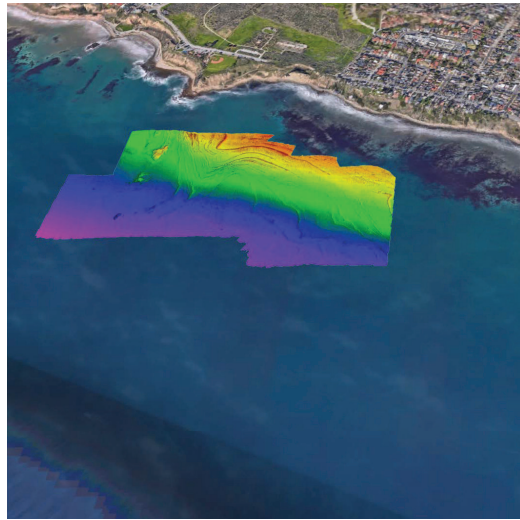
info@seafloor.com | www.seaflorsystems.com

HydroCat-180™

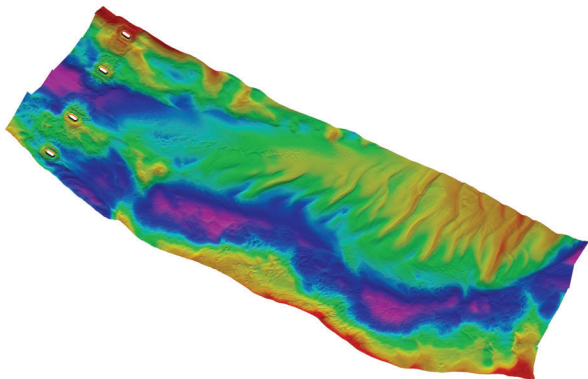
Uncrewed Surface Vessel



HydroCat-180 Specifications



SeaBat T51 Data



Dual Head SeaBat T50 Data

Specifications

Typical Survey Speed	2.5 kn - 4.5 kn
Top Speed	6 knots RCV
Length	18 ft / 5.5 m
Hull Width	8 ft / 2.5 m
Height	7.5 ft / 2.3m
Transducer Wells	Main, SVP
Frame	Powder Coated Aluminum
Hardware	Stainless Steel
Weight	800 lbs
Endurance	Up to 8 Hours at Survey Speed
GPS	Customer Specified
Payload	362.87 kg / 800 lbs
Power	25.2 VDC
Motor	Dual Electric Outboards
R/C	2.4 GHz/900MHz Long Range RCU (868MHz UK)
Remote Range	Up to 2km

Instrumentation Options

Sonar Modules

*Multibeam
Echosounder
Singlebeam
Echosounder
ADCP/DVL
Side Scan Sonar
Subbottom Profiler
Magnetometer*

Auxiliary Sensors

*Sound Velocimeter
Sound Velocity
Profiler / CTD Wi-Fi
Remote Desktop
HD Thermal Camera
Remote SVP Winch
LiDAR*

GPS/GNSS

*RTK/GNSS
DGPS
INS*