

# Seafloor™

## ECHOBOAT-160

Uncrewed Surface Vessel for Hydrographic Survey Applications



### KEY FEATURES

- ▶ Two-Person transportable
- ▶ 8 hour endurance
- ▶ Autonomous and Remote Control operation
- ▶ Fully customizable to fit any job and budget

### OPTIONAL FEATURES

- ▶ SmartCast™ SVP/CTD Winch System
- ▶ Extended Range, Telemetry, and Control
- ▶ AutoNav™ Autopilot System
- ▶ Computer with Wifi Bridge
- ▶ Front Facing Camera
- ▶ EchoCart with LARS™ transport / launch & recovery system.

The EchoBoat-160 USV is a purpose-built remote survey platform for hydrographic data collection. With true one-switch startup, the nimble vessel accomplishes the same results demanded of large, crewed boats more efficiently and at a fraction of the cost. Like its renowned predecessors, the fifth generation EchoBoat-160 integrates professional-grade sensor suites in a compact package to navigate challenging bodies of water by remote control or autonomous wayfinding. Perform hydrographic surveys remotely, safely, and confidently with this meticulously engineered uncrewed surface vessel.

### KEY UPDATES

- ▶ Single Battery Pack with one-switch Startup
- ▶ Lightweight aluminum deck with improved accessibility
- ▶ Easy access watertight lid saves time during startup and when swapping sensors
- ▶ Stiffer, redesigned mast improves data collection accuracy



*EchoBoat-160™ Gen 5 with optional SmartCast™ Winch*

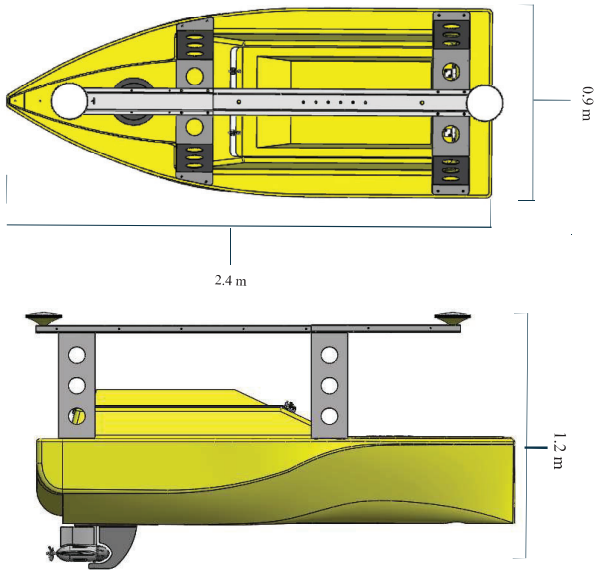
Seafloor Systems, Incorporated | 4415 Commodity Way | Shingle Springs, CA 95682 | USA

info@seafloor.com | www.seaflorsystems.com

REV 9/2/22

# EchoBoat-160™

Uncrewed Surface Vessel



EchoBoat-240 Specifications

## Specifications

|                               |  |
|-------------------------------|--|
| Typical Survey Speed          | 2 kn   |
| Top Speed                     | 3 knots RCV                                  |
| Hull Length                   | 1.7 m / 66.14 in                             |
| Hull Width                    | 0.8 m / 31.5 in                              |
| Hull Material                 | UV Resistant HDPE                            |
| Transducer Wells              | Main   |
| Frame                         | Powder Coated Aluminum                       |
| Hardware                      | Stainless Steel                              |
| Empty Hull Weight & Batteries | kg / lbs                                     |
| Battery Endurance             | Up to 8 Hours at Survey Speed                |
| GPS                           | Customer Specified                           |
| Payload                       | kg / lbs                                     |
| Power                         | 24v  |
| Motor                         | 2 x Thrusters                                |
| R/C                           | 2.4 GHz/900MHz Long Range RCU<br>(868MHz UK) |
| Remote Range                  | Up to 2km                                    |

## Instrumentation Options

### Sonar Modules

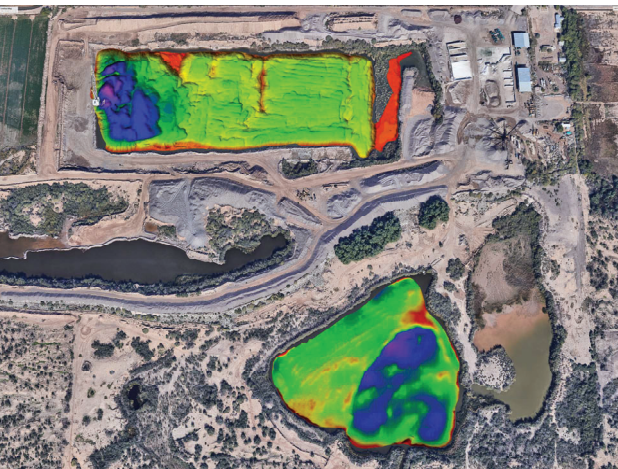
Multibeam  
Echosounder  
Singlebeam  
Echosounder  
ADCP/DVL  
Side Scan Sonar  
Subbottom Profiler  
Magnetometer

### Auxiliary Sensors

Sound Velocimeter  
Sound Velocity  
Profiler / CTD Wi-Fi  
Remote Desktop  
HD Thermal Camera  
Remote SVP Winch  
LiDAR

### GPS/GNSS

RTK/GNSS  
DGPS  
INS



Seafloor Systems, Incorporated | 4415 Commodity Way | Shingle Springs, CA 95682 | USA

info@seafloorssystems.com | www.seafloorssystems.com