

## Connecting Viva controller to SonarMite Echosounder CS10/CS15 Settings



1

Pg 1 of 13

- when it has to be right

*Leica*  
Geosystems

## Connecting Viva controller to SonarLite CS10/CS15 Settings - Introduction

The new Leica Geosystems Viva CS10 and CS15 controllers can be connected to an Echo Sounder by Bluetooth or by serial cable. The Ohmex 'SonarLite' legacy echo-sounder has a serial cable connection only; the SonarMite has both Bluetooth and serial options.

This slideshow covers the use of serial cable connection to the SonarLite and SonarMite (the process is the same), and also the minimal extra steps to use the SonarMite with Bluetooth.

For CS10 and CS15 dataloggers, the correct Leica cable to use is the GEV 162, connected to the Ohmex serial cable with Green connector.

2

Pg 2 of 13

- when it has to be right

*Leica*  
Geosystems

## Connecting Viva controller to SonarLite

### CS10/CS15 Settings

1. Switch on, choose GPS, and go to main screen.
2. Highlight option 3, Instrument.



3

## Connecting Viva controller to SonarLite

### CS10/CS15 Settings

3. Choose option 2, 'Instrument connections' (or 'Connect to Instrument' if using icons)



4

## Connecting Viva controller to SonarLite

### CS10/CS15 Settings

4. Choose option 2,  
'All other connections'



5

## Connecting Viva controller to SonarLite

### CS10/CS15 Settings

5. Highlight 'ASCII Input',  
then Press F3, 'Edit'.

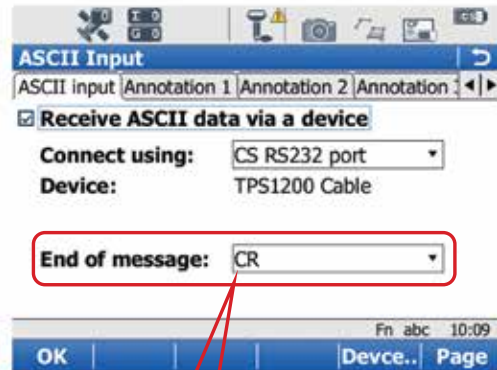


6

## Connecting Viva controller to SonarLite

### CS10/CS15 Settings

6. Tick 'Receive ASCII data..'
7. At 'Connect using',  
Choose 'CS RS232 Port'.  
(7a. To use the SonarMite  
via Bluetooth, select an unused  
'CS Bluetooth' port)
8. Press F5 'Device'.



Not available in Smartworx v5.70

7

Pg 7 of 13

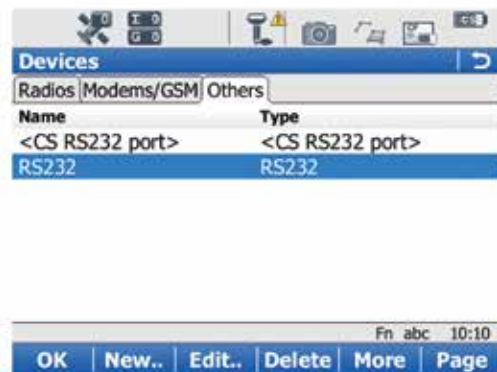
- when it has to be right



## Connecting Viva controller to SonarLite

### CS10/CS15 Settings

9. Press F6 to page to 'Others'  
and highlight 'RS232'.
10. Press F2 'New'.



8

Pg 8 of 13

- when it has to be right



## Connecting Viva controller to SonarLite

### CS10/CS15 Settings

11. Create new 'Name', eg 'Sonarlite'

12. Choose 'Baud rate' as 9600 or 4800

13. Press F1 'Store'.

<b>Name:</b>	Sonarlite
<b>Type:</b>	RS232
<b>Baud rate:</b>	9600 or 4800
<b>Parity:</b>	None
<b>Data bits:</b>	8
<b>Stop bit:</b>	1
<b>Flow control:</b>	None

Store

Fn abc 10:11

9

## Connecting Viva controller to SonarLite

### CS10/CS15 Settings

The new device will appear.

14. Press F1 'OK'.

Name	Type
<CS RS232 port>	<CS RS232 port>
RS232	RS232
Sonarlite	RS232

OK | New.. | Edit.. | Delete | More | Page

Fn abc 10:11

10

## Connecting Viva controller to SonarLite

### CS10/CS15 Settings

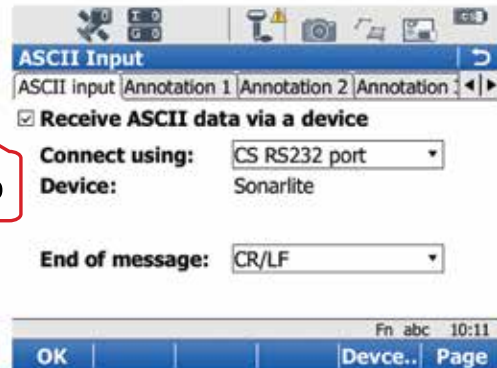
15. For 'End of message' choose  
'CR/LF' (do not press OK yet)

Not available in Smartworx v5.70

(15.a If using Bluetooth, press

F4 'Search', identify the

SonarMite, and press F1 'OK' to accept the device)



11

Pg 11 of 13

- when it has to be right



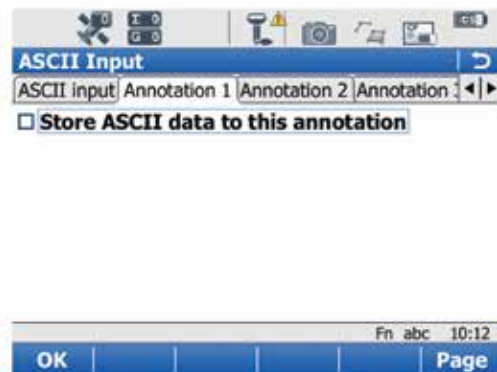
## Connecting Viva controller to SonarLite

### CS10/CS15 Settings

16. Press F6 and page to the tab

'Annotation 1'.

17. Tick the box 'Store ASCII data..'



12

Pg 12 of 13

- when it has to be right



## Connecting Viva controller to SonarLite

### CS10/CS15 Settings

18. In the 'Message desc' box, enter a description, eg 'Depth'.

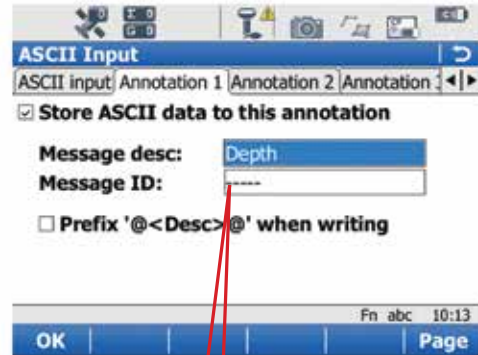
19. Press F1 'OK'.

20. Press F1 'OK' again to

return to the opening screen..

And you have finished!

You can now use the 'Star' (favourites) key, scroll down to 'Hot Keys..' and select 'GPS – ASCII Input Status' on a hot-key to view the incoming depth data at any time.



**STEP 18A.** When starting a NEW job, you must come to this Message ID and place a <space> in the ID field. This field is reset every time you start Smartworx VIVA. Otherwise the DEPTH values will not be available.

- when it has to be right



Pg 13 of 13

### Tips on Data Collection:

Surveys must be performed using the following setting:

- AUTO tab (stores shots at intervals)
- AUTO POINTS (log every 1 or 5 seconds)

