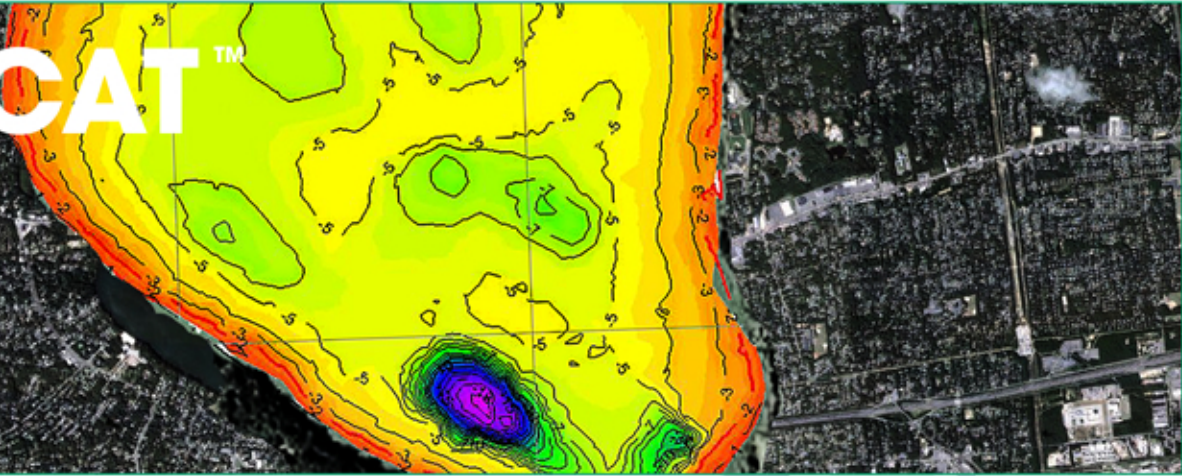


ECHOCAT™

Product Datasheet



ABOUT

The EchoCat™ echosounder system is a hand-portable, integrated hydrographic survey sonar system capable of making measurements for small stream channel profiling. The Echo Cat was developed to address a need to do such surveying in remote locations such as National Forests or Parks.

FEATURES

- Single beam Echosounder system
- Internal bathymetry and DGPS data logging
- High-performance DGPS receiver
- Field proven, ruggedized, splash-proof construction

OPTIONS

- Sound Velocity Profiler
- RTK GPS
- Radio Telemetry
- Optional Side Scan Sonar Module

SPECS

ECHOSOUNDER

- Frequency: 200-kHz
- Beam width: 9-degrees
- Ping Rate: 6 Hz
- Depth Accuracy: 1cm /0.1% of depth
- Output Formats: NMEA, ASCII, Quality

- Range: 0.3m-75m
- I/O: Serial, Bluetooth
- Power: Rechargeable 12V battery
- Compatibility: Trimble, Leica, Topcon, Sokkia, Epoch, Ashtech, Magellan, Carlson

PHOTOS

