

## SUBPRO 1210 Sub-Bottom Profiler High Resolution at Good Penetration

The new state of the art high-frequency, high power sub-bottom profiler from General Acoustics, the SUBPRO 1210, with its advanced sending signal synthesis, high performance data acquisition, with high dynamic range and SNR and advanced signal processing is a universal survey system with outstanding advantages for a wide range of applications with different survey tasks.



Fig. above: The 12 KHz transducer



Fig. above: Example of Survey Ship

### Applications:

- High resolution subsoil exploration
- (Buried) pipeline and small object detection
- Offshore hazard surveys
- Dredge, mining and dump monitoring
- Very shallow water surveys
- High sediment load surveys
- Volume determination (e.g. for sand reclamation)
- Scour detection and monitoring
- Environmental surveys
- Archaeological surveys
- Sediment transport investigations

### Advantages:

- Suitable for a Wide Range of Survey Tasks
- Shallow Water Surveying starting at 1.5 m
- Typical Seabed Penetration up to 10 m in Sand
- Highest Detection Probability of Objects and Layers
- Real-Time Zoom and Re-Processing of RAW data
- Highest Productivity for Result Generation
- Multi-Monitor Support
- Easy to use WINDOWS<sup>®</sup> software SUBPRO Studio for operation and re-processing
- Complete Stand-Alone System and Easy System Integration



Fig. above: Example, mounting of the transducer at a tube

# SUBPRO 1210 Sub-Bottom Profiler



High Resolution at Good Penetration

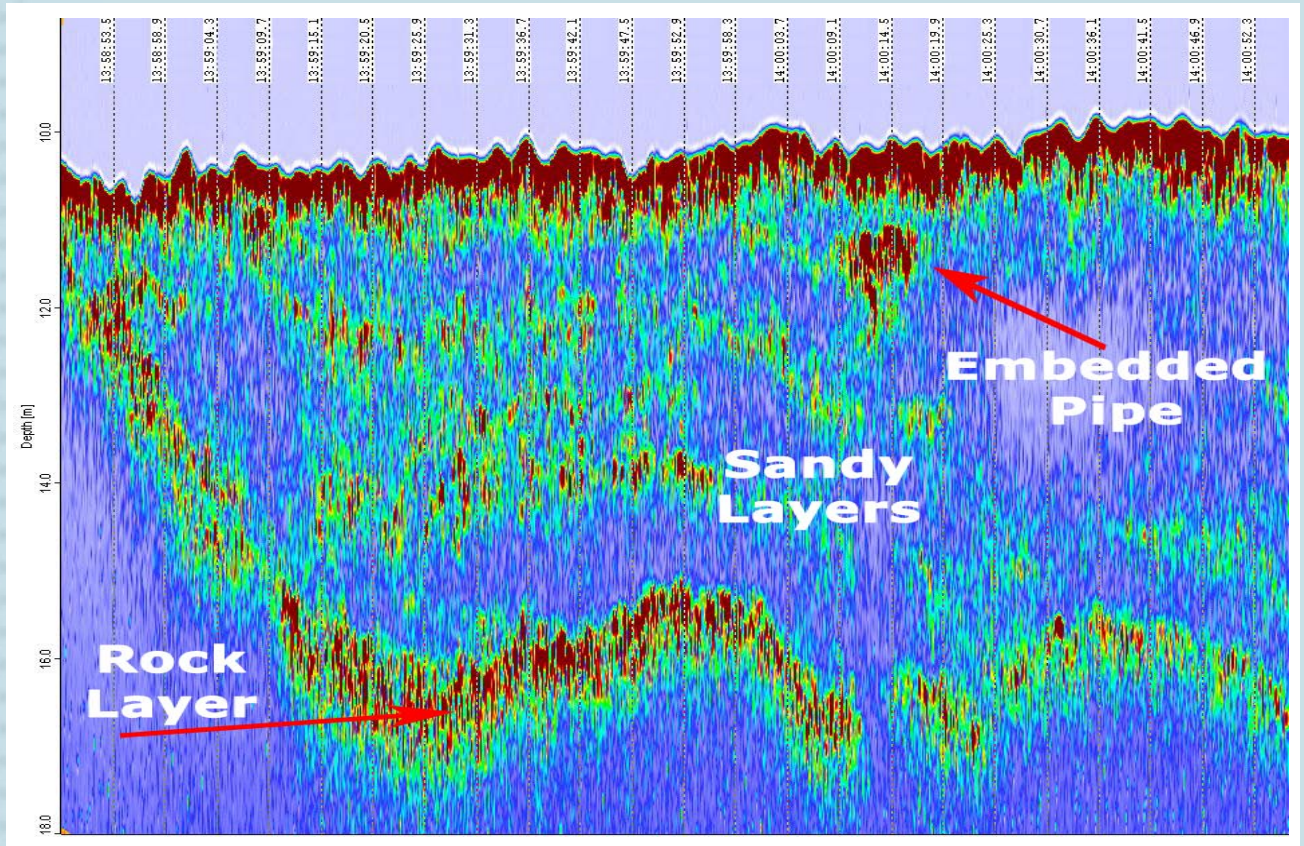


Fig. above: Survey in the Port of Aberdeen

The SUBPRO 1210-System consists of a 19" 6U housing, which integrates controller for triggering, transmitting, receiving, amplifying and processing of signals, analysis unit, pps-module for time synchronisation, power supply, including high performance processor (Windows-PC). It also includes the storage of results and project files on hard disc (data back up CD-R/DVD-R combo drive), TFT monitor and easy to handle WINDOWS® software SUBPRO Studio for re/post-processing and export of data.

### Specifications of the SUBPRO 1210:

**Technical Resolution:** 1 mm

**Typical Penetration:** > 10 m

**Frequency:** 12 kHz

**Power:** up to 10 kW peak

**Weight of Transducer:** 35 Kg

**Size of Transducer (Ø/height):** 380 mm / 165 mm

**Input:** pps time, GPS (NMEA), HRP (optional)

**Output:** SEG-Y, XTF (optional), Ethernet, Printer, CD-R/DVD-R

Representative of General Acoustics:



### General Acoustics GmbH

Am Kiel-Kanal 1

24106 Kiel / Germany

Phone: +49 431 5 80 81 80

info@GeneralAcoustics.com

www.GeneralAcoustics.com

SUBPRO 1210 Sub-Bottom Profiler