

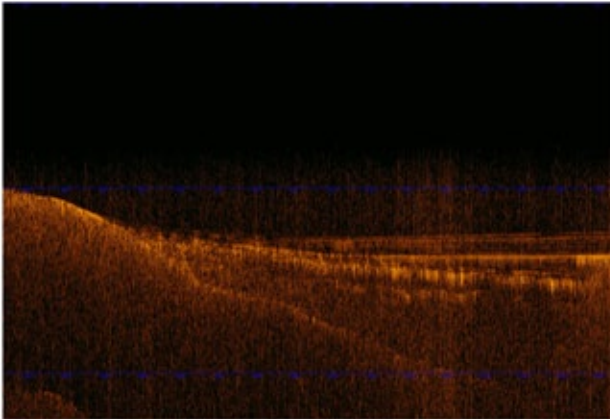


ROSS 4900 Series

Sub Bottom Profiler Module Specifications:

General:

The sub bottom profiler module of the 4900 series, can be used independently or together with the side scan features of the system. The 4900 series is a modular system that can be configured with either one or both functions installed. At a later date it is a simple factory upgrade consisting of installing the appropriate transceiver printed circuit boards and configuring the software to add the missing feature. Of course the additional transducer(s) will also be required.



Transceiver:

Frequency:	3.5Khz or 7.0khz single frequency, switch selectable with purchase of second transceiver PCB.
Transmit Power:	1500 watts rms.
Pulse width:	Switch selectable .2, .5, 1.0ms
Receiver:	Plug in single frequency PCB. 3.5 or 7 kHz. No TVG or AGC.
Gain control:	Rotary knob. 10 position, even steps.
Output signal:	Envelope or detected signal, switch selectable.

Transducer:

Frequency:	3.5 or 7.0 Khz.
Beam angle:	80 degree conical at -3db.
Operating depth:	2000 feet maximum.
Configuration:	System can be user configured for single or dual transducer operation. Dual transducers offer a significant increase in shallow water performance. One transducer is used for transmit, one receive, eliminating some of transducer "ringout" inherit at these frequencies.
Mounting:	On small boats in calm water, over the side pole mounting is standard. Consult the factory for optional mounting configurations for use in offshore, deepwater applications.

